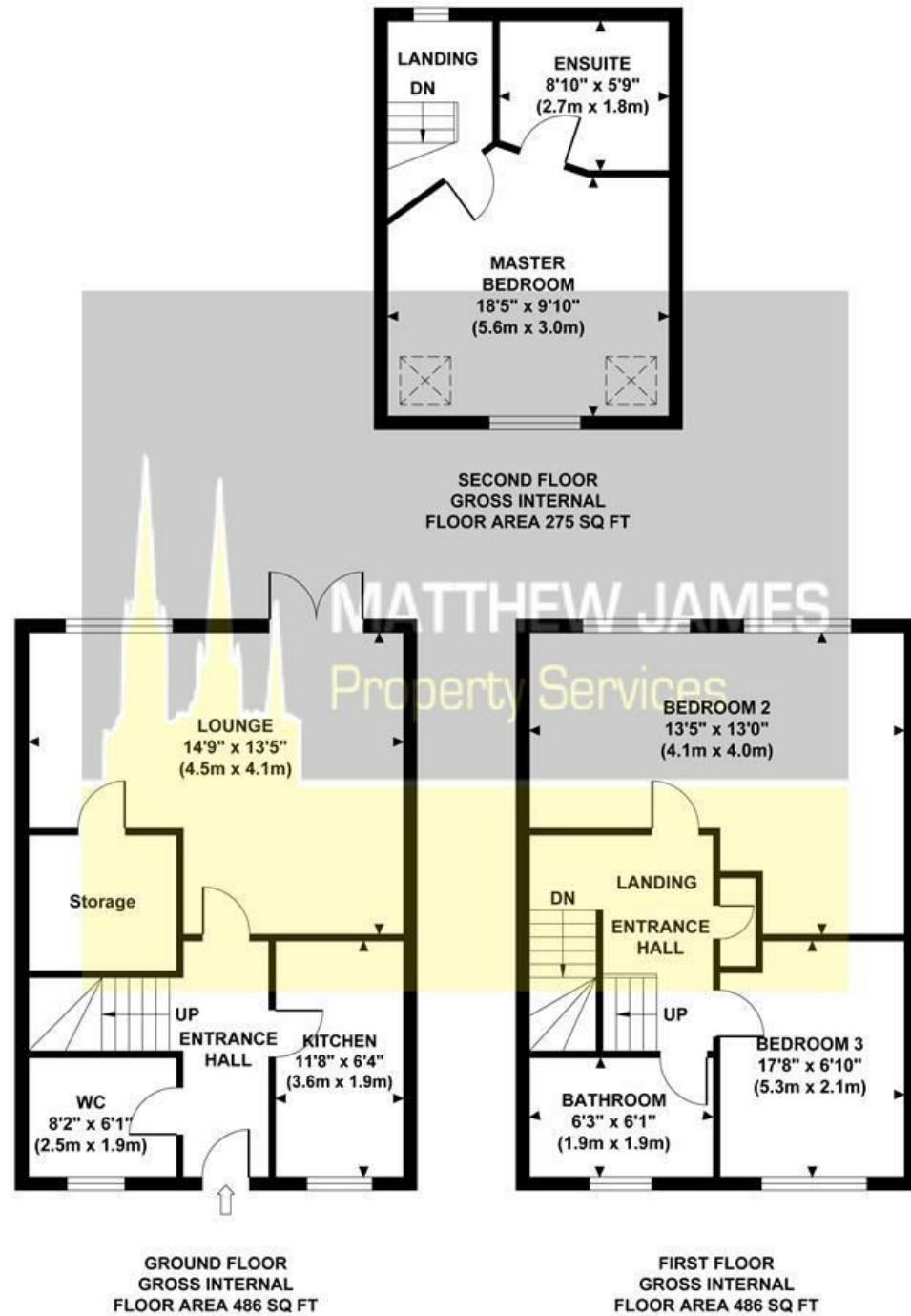


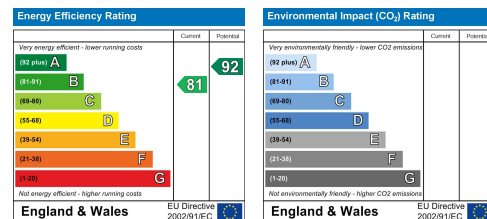
## COMMON WAY

Approximate Gross Internal Area 1247 sq ft / 115.90 sq m



Although every attempt has been made to ensure accuracy, all measurements are approximate and no responsibility is taken for any error, omission, or mid-statement. This floor plan is for illustrative purposes only and not to scale. Measured in accordance to RICS standards.

These particulars, whilst believed to be accurate are set out as a general outline only for guidance and do not constitute any part of an offer or contract. Intending purchasers should not rely on them as statements of representation of fact, but must satisfy themselves by inspection or otherwise as to their accuracy. No person in this firm's employment has the authority to make or give any representation or warranty in respect of the property.



## 29 Common Way, Liberty Park, Stoke Heath, Coventry CV2 3JA

VACANT... NO UPWARD CHAIN... THREE DOUBLE BEDROOMS... BASED OVER THREE FLOORS... MASTER EN-SUITE... ALLOCATED PARKING TO REAR... PVCU DOUBLE GLAZED THROUGH OUT... GROUND FLOOR CLOAKROOM... PERFECT FOR FIRST TIME BUYER... GREAT INVESTMENT OPPORTUNITY... CLOSE TO AMENITIES AND STOKE HEATH PARK. A lovely property located on Liberty Park in Stoke Heath. Briefly comprising of front and rear gardens, ground floor cloakroom, kitchen, living room, two bedrooms and family bathroom on the first floor and master bedroom and en-suite to the second floor. There is allocated parking to the rear of the property and you are just a short walk away from shops, schooling, park and major bus routes. For those that commute, the A444 and the motorway network are just a short drive away. Its vacant and we have keys! Call us now to book your viewing!

Offers Over £225,000

### CONTACT INFORMATION

24a Warwick Row, Coventry CV1 1EY

02477 170170

info@matthewjames.uk.com

www.matthewjames.uk.com

Facebook

Twitter

**29 Common Way, Liberty Park,**  
Stoke Heath, Coventry CV2 3JA



- TOWN HOUSE
- ALLOCATED PARKING TO REAR
- CLOSE TO ALL AMENITIES
- BASED OVER THREE FLOORS
- GROUND FLOOR CLOAK ROOM
- PERFECT FOR FIRST TIME BUYERS
- MASTER BEDROOM WITH EN-SUITE
- THREE DOUBLE BEDROOMS
- GREAT INVESTMENT OPPORTUNITY

**Front Garden**

**Entrance Hallway**

**Kitchen**

**Ground Floor WC**

**Lounge Dining Room**

**First Floor Landing**

**Bedroom Three**

**Bedroom Two**

**Family Bathroom**

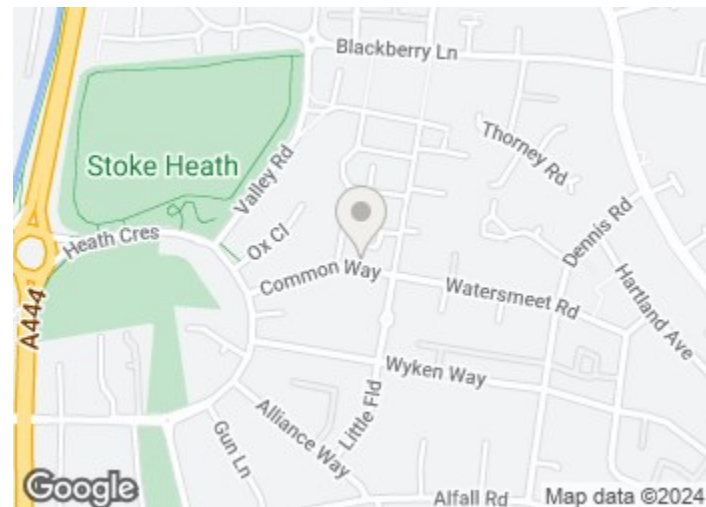
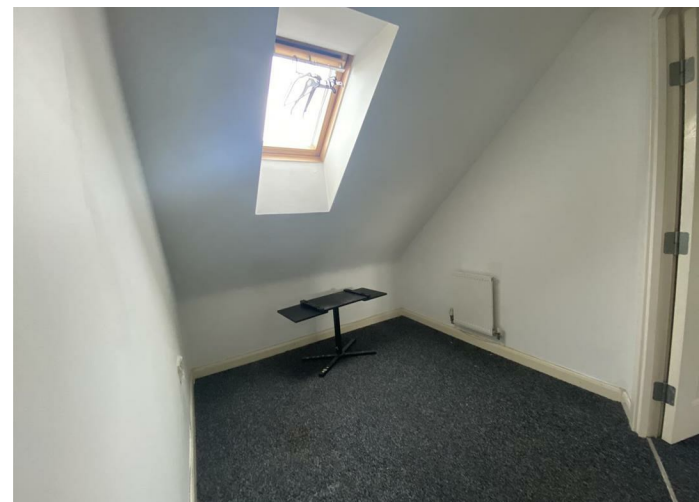
**Second Floor Landing**

**Master Bedroom**

**Master En-Suite**

**Rear Garden**

**Allocated Parking Area**



**Directions**

